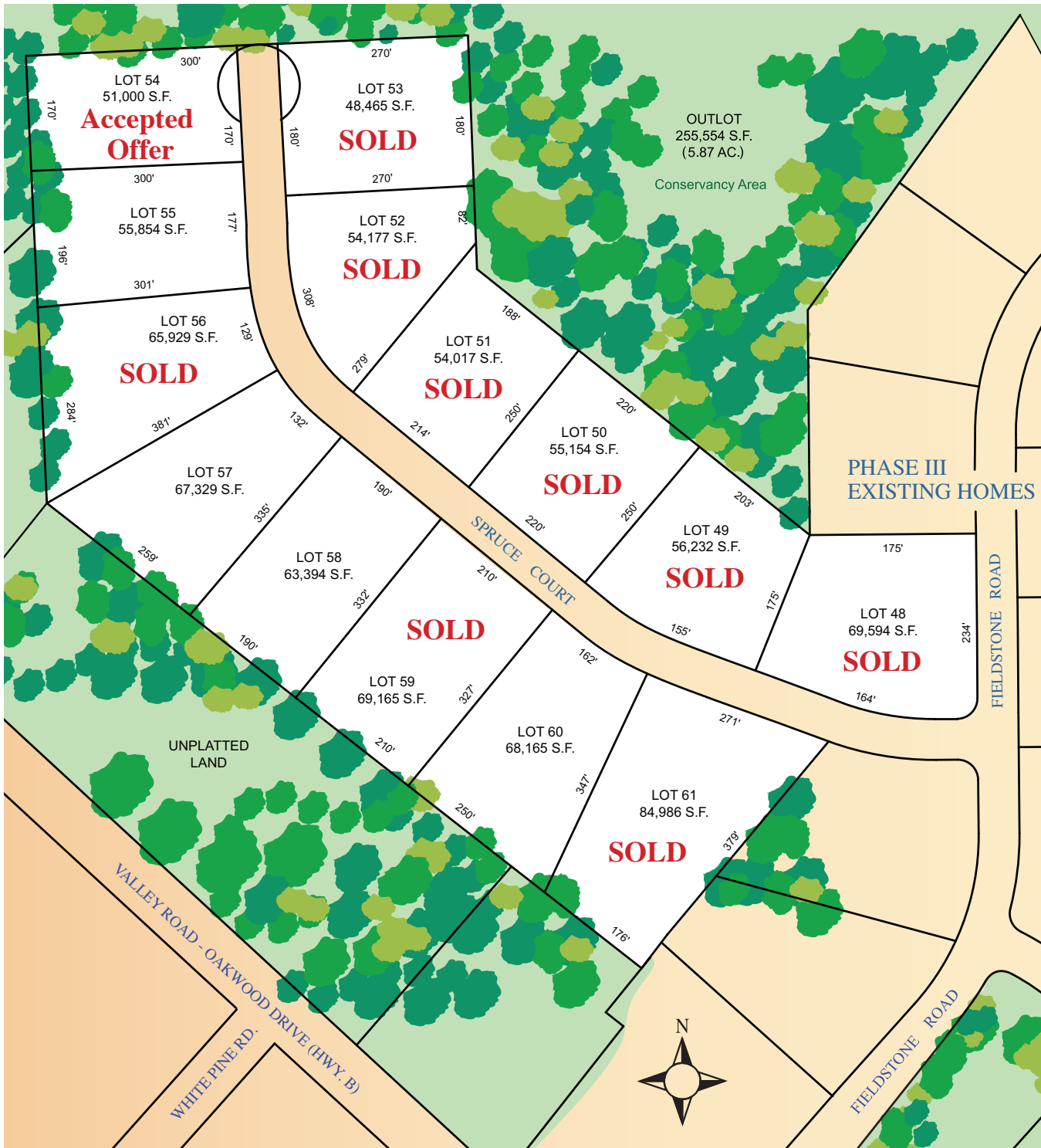


Valley Road Farms Phase IV



LOT #	SQ. FT.	PRICE
48	69,594	<b>SOLD</b>
49	56,232	<b>SOLD</b>
50	55,154	<b>SOLD</b>
51	54,017	<b>SOLD</b>
52	54,177	<b>SOLD</b>
53	48,465	<b>SOLD</b>
54	51,000	<b>A.O.</b>
55	55,854	\$259,900
56	65,929	<b>SOLD</b>
57	67,329	\$269,900
58	63,394	\$279,900
59	69,165	<b>SOLD</b>
60	68,165	\$279,900
61	84,986	<b>SOLD</b>

Co-brokers welcome.

For additional information, please call:  
 262-646-3264 Office  
 414-254-4860 Lola - cell  
[www.valleyroadfarms.com](http://www.valleyroadfarms.com)